



Our Vision

Inspiring Curiosity,
Embracing Innovation,
Engaging the Community!

Our Mission

Whitchurch-Stouffville Public Library, as an innovation and inspiration hub, provides a positive impact on the quality of life in our community through the delivery of dynamic resources, engaging technologies, and vibrant programs.



ACCOMPLISHMENTS:

- Created a **nursery space** inside the Library for caregivers & mothers to nurse their children in a calm, quiet area. This reinforces the Library's commitment to providing inclusive spaces for all community members in our facility.
- Continued the momentum of the large scale events hosted in 2022 by **expanding the Skilled Trades Expo and Fan Fest** events.
- Launched the **Adventure Zone**, an outdoor hub for the community to rent bicycles, bicycle accessories, sporting equipment, outdoor gear and more! The artwork on the storage container won a **Gold Hermes Creative Award** for its design.
- Offered **1,669 in-person programs** to **33,873 satisfied library customers**.
- Circulated **295,889 physical items** and **472,837 electronic items**—a 6% increase from 2022.
- Saw a 36% increase in visitors from 2022 – **151,069** to **204,727!**



Library Board Members

CHAIR

Sandra Liaros

VICE-CHAIR

Nadine Williams

COUNCILLOR

Hugo Kroon
Maurice Smith

SECRETARY & TREASURER

Margaret Wallace, CEO

TRUSTEES

Carol Hughes
David Parmer
John Relph
Colin Whitebread



204,727
visitors

7,902
Internet workstation visits

100
guests at Stouffville Reads

597
SRC participants

33,873
in-person program participants

2,365
new cardholders

21,211
database sessions

1,669
in-person programs offered

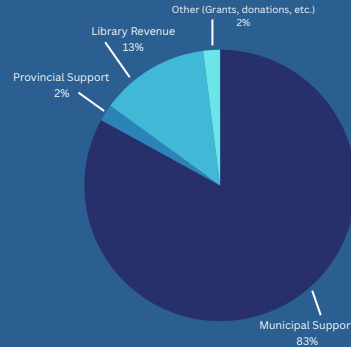
295,889
physical items circulated

472,837
digital items circulated

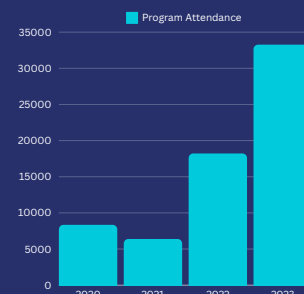
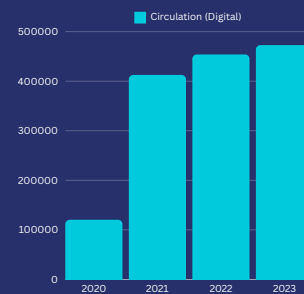
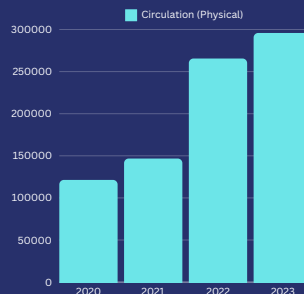
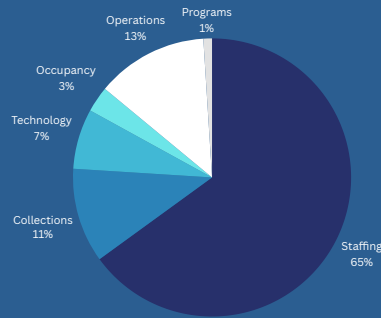
Financial Summary



Operating Revenues:



Operating Expenses:



2023

Annual Report



**Whitchurch-Stouffville
PUBLIC LIBRARY**